

# Telehealth

## Patient Information



Centre for Eye Health

The Centre for Eye Health (CFEH) Telehealth service allows your optometrist to consult with colleagues highly trained in the diagnosis and management of eye disease. Using telehealth, your optometrist is able to seek a second opinion or advice, essentially giving you an optometry “team” dedicated to ensuring you receive the best possible care.

Here are some important points to know about this service:

- You remain under the care of your optometrist
- Consultations are between your optometrist and the CFEH optometrist only.
- Advanced screen-sharing technology with end-to-end encryption ensures these consultations are secure.
- Your optometrist will only share essential clinical information and this information is stored securely on the CFEH patient management system.
- Your de-identified clinical data may be used for research and development of a clinical decision support tool to benefit the delivery of eyecare for all.

There is no charge for this service, thanks to the generous support of Guide Dogs NSW/ACT.

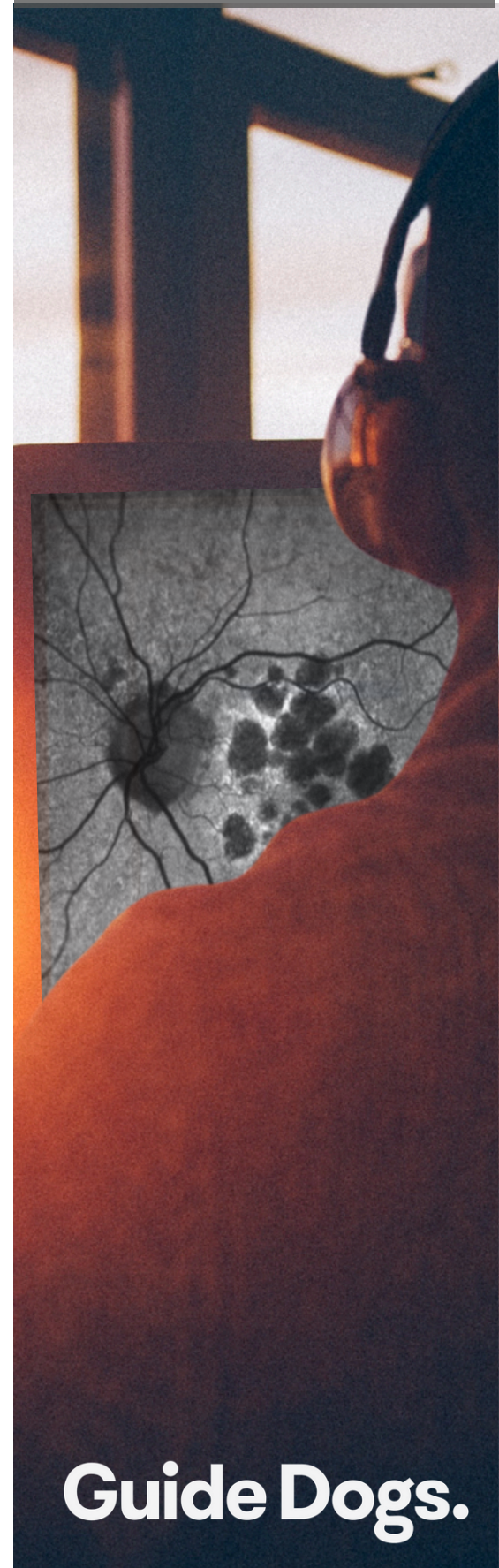
## Questions?



(02) 8378 0246



[telehealth@cfeh.com.au](mailto:telehealth@cfeh.com.au)



**Guide Dogs.**