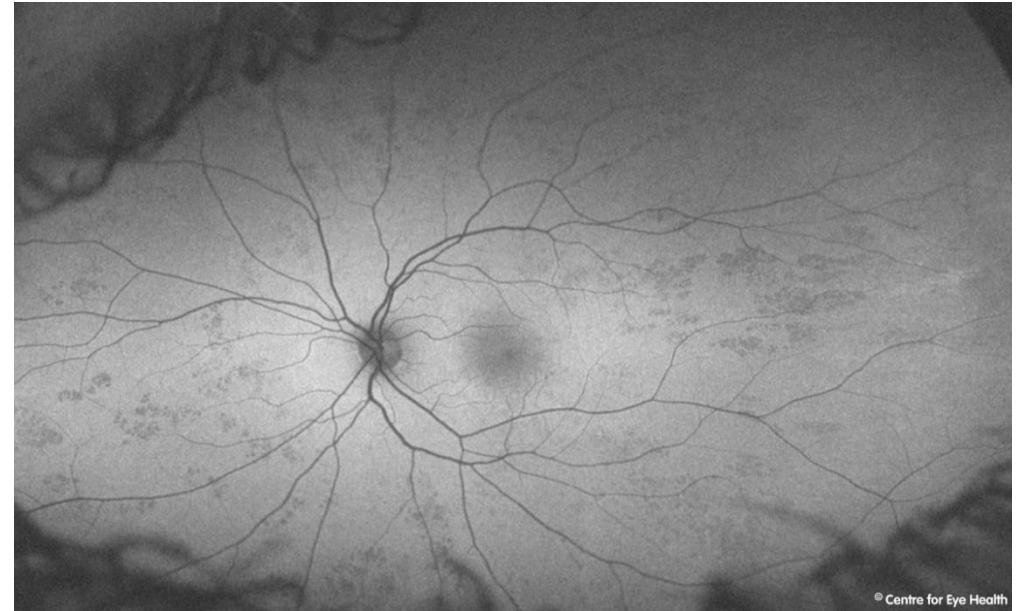
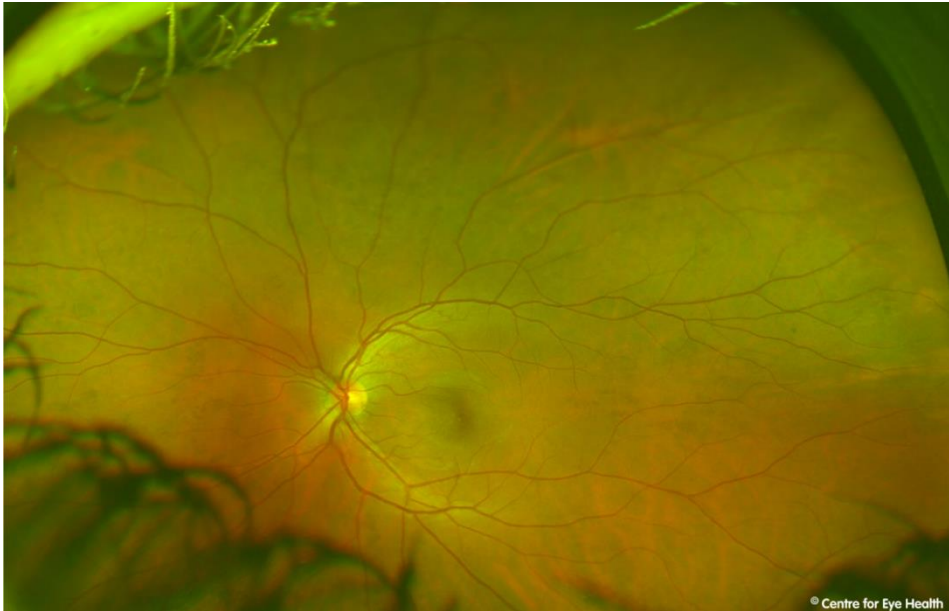




CFEH Facebook Case #69

A 25 year old Caucasian female was referred for assessment of multiple retinal lesions. She is migraine sufferer but otherwise healthy. The lesions are almost invisible on optomap, but show up clearly with fundus autofluorescence. What is the nature of the lesions seen?



Proudly brought to you by

LEARNING FOR VISION



Centre for Eye Health



Optometry

NEW SOUTH WALES
AUSTRALIAN CAPITAL TERRITORY

ANSWER

Congenital grouped pigmentation of the RPE (“Bear tracks”).

These are multiple, small, flat, black lesions that are usually clustered in a single quadrant, but in this case are present around 360 degrees of the fundus so this is a somewhat atypical presentation. Usually you would expect the lesions to increase in size towards the periphery of the retina.

Fundus autofluorescence shows the lesions to be hypo-autofluorescent which has highlighted them clearly in this case, and OCT imaging shows no obvious abnormalities.

This patient had already been screened for bowel disease, however Familial Adenomatous Polyposis (FAP) is typically associated with multiple pisciform lesions such as seen below rather than the bear-tracks seen in this patient.

