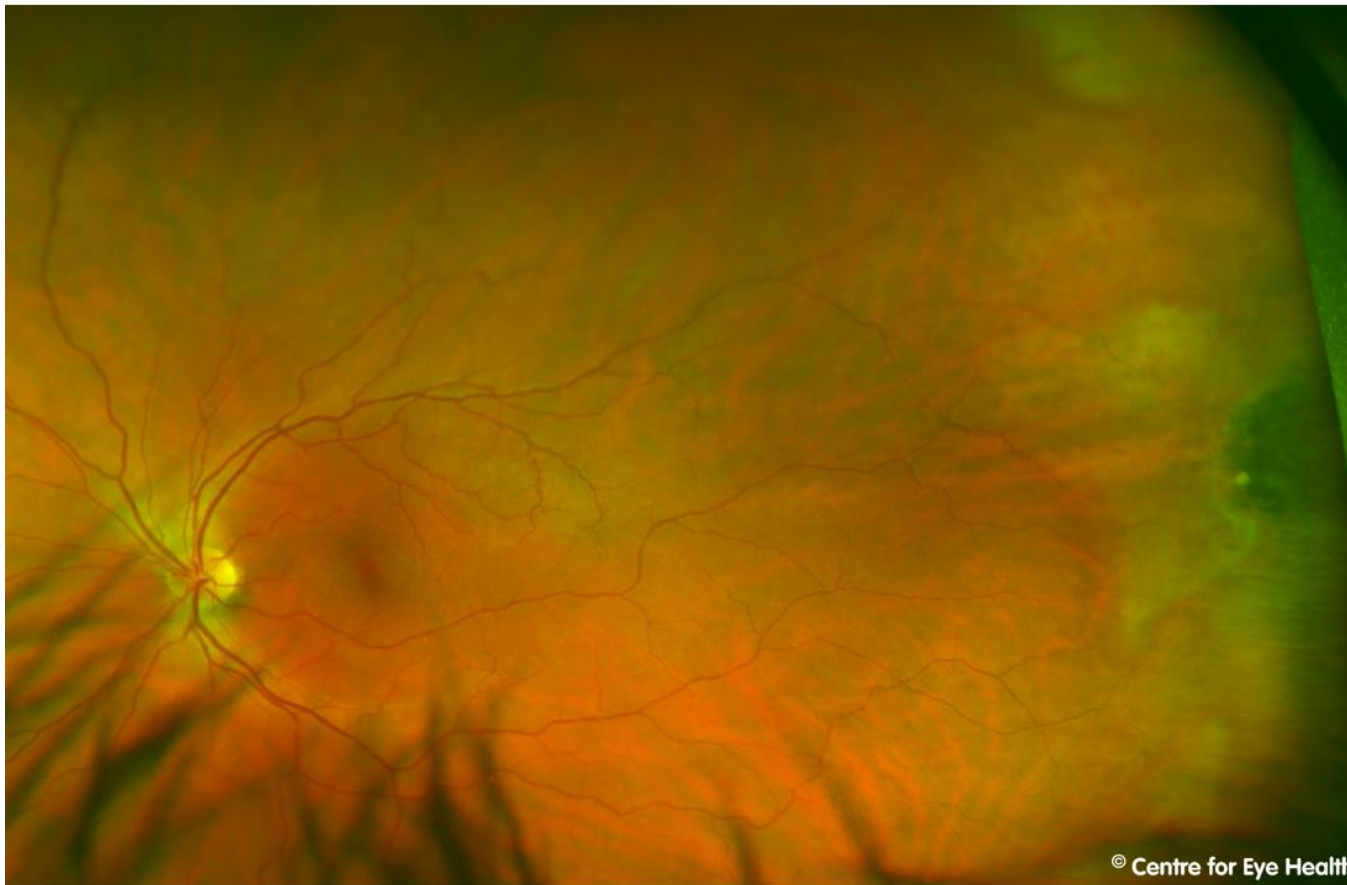




## CFEH Facebook Case #90

Following is an Optomap image taken from a 31 year old Caucasian male. Can you identify both of the lesions (one light, one dark) seen at 3 o'clock in the temporal periphery of his left eye?



© Centre for Eye Health

Proudly brought to you by  
**LEARNING & VISION**



Centre for Eye Health



Optometry  
NEW SOUTH WALES  
AUSTRALIAN CAPITAL TERRITORY

Proudly brought to you by

**LEARNING FOR VISION**



Centre for Eye Health



Optometry  
NEW SOUTH WALES  
AUSTRALIAN CAPITAL TERRITORY

# ANSWER

The darker area at 3 o'clock is an oral bay and the white dot-like lesion an oral pearl.

An oral bay is formed at the ora serrata when 2 or more ora "teeth" (or dentate processes) join. These may appear similar to a retinal hole, however oral bays do not increase the risk of retinal detachment. Oral pearls are drusen-like deposits between bruch's membrane and the retinal pigment epithelium which appear as glistening white deposits. They are usually located at the ora "teeth" or less commonly in an oral bay, as in our patient.

There are also extensive areas of white without pressure visible in the temporal periphery of this patient.