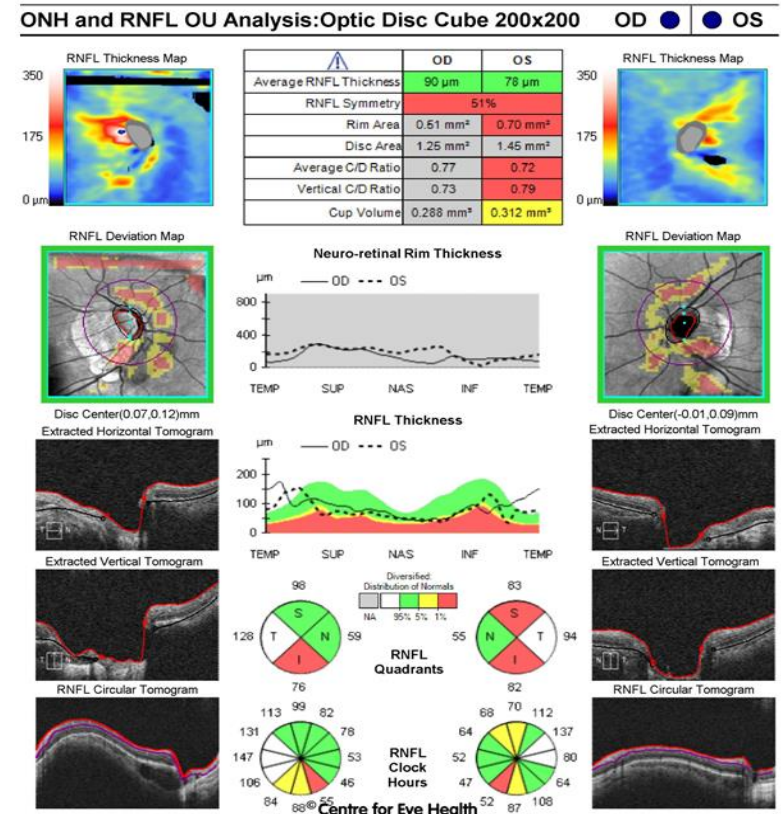
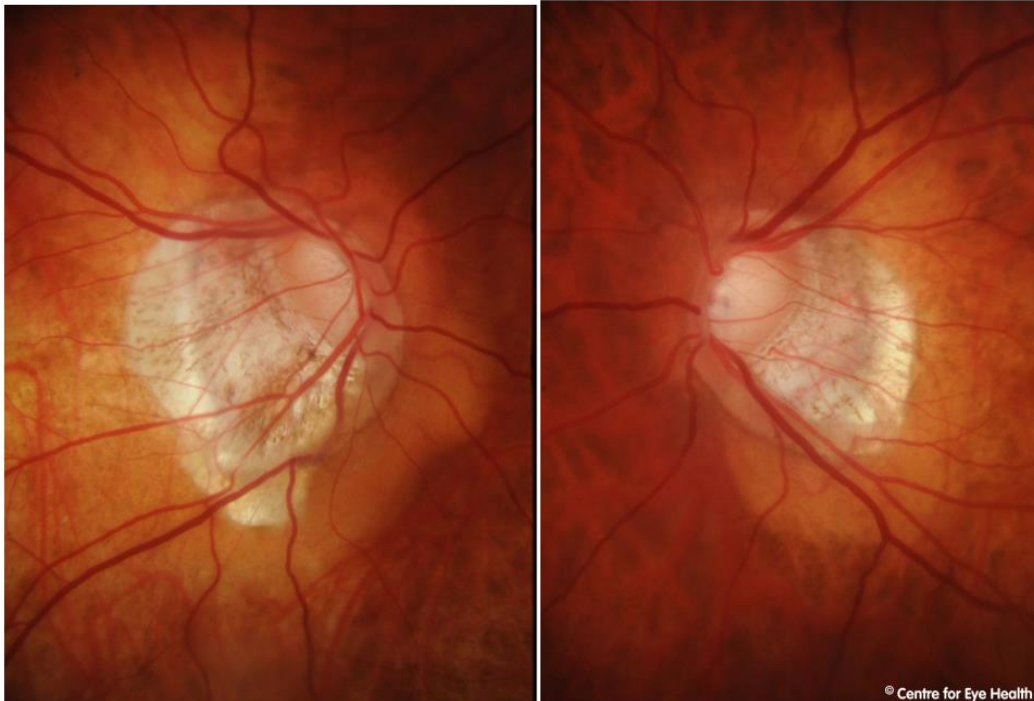




CFEH Facebook Case #73

A 50 year old Caucasian female presented for a routine eye examination. She was highly myopic (OD>OS) prior to bilateral IOLs, her intraocular pressures are 20mmHg OU and central corneal thickness 561µm OD, 545µm OS. Based on the disc appearance and OCT result, does this patient have glaucoma?





ANSWER

The discs are very difficult to assess due to a combination of the inherent tilting, marked PPA and underlying peripapillary intra-choroidal cavitation. The OCT RNFL analysis also needs to be viewed with caution due to variable segmentation associated with the same factors and the GCA analysis was unable to segment the layers accurately.

Below are the visual fields for this patient: There is a notable general depression in the right compared to the normative data with the pattern deviation showing a significant superior arcuate visual field defect and a suspicious nasal depression in the left.

Based on the clinical picture a whole and in conjunction with a glaucoma specialist, this patient has been determined to have glaucoma and is being treated.

